

ATTACHMENT IV-1

TANK SYSTEMS AND DRAWINGS

TABLE OF CONTENTS

IV.A.	Stabilization Tank System.....	1
IV.A.1.	Tank System Engineering Drawings	1
IV.B.	Leachate Tank System	2
IV.B.1.	Leachate Tank System Engineering Drawings	2

IV.A. Stabilization Tank System

The Stabilization Tank System includes the following tanks:

1. Stabilization Tank 1 (Tank 122-TN-001) is the west tank;
2. Stabilization Tank 2 (Tank 122-TN-002) is the center tank; and
3. Stabilization Tank 3 (Tank 122-TN-003) is the east tank.

The Stabilization Tanks are double-walled, open-topped tanks and are supported by a reinforced concrete foundation. Secondary containment for the Stabilization Tanks is provided by a secondary tank which surrounds the side walls and floor of the primary tank in accordance with the requirements of Utah Administrative Code (UAC) R315-264-193(e)(3). The floor of the secondary tank is sloped to drain a release from the primary tank and allow detection of the release within 24 hours.

IV.A.1. Tank System Engineering Drawings

The following table identifies the drawing associated with the Stabilization Tanks.

Unit Description	Drawing Number
Stabilization Tank Plan and Details	D-32-20-703
Stabilization Tanks; Secondary Tank Plan	D-32-20-704
Stabilization Tank Foundation Plan and Sections	D-32-20-201
Foundation Sections and Details	D-32-20-202

IV.B. Leachate Tank System

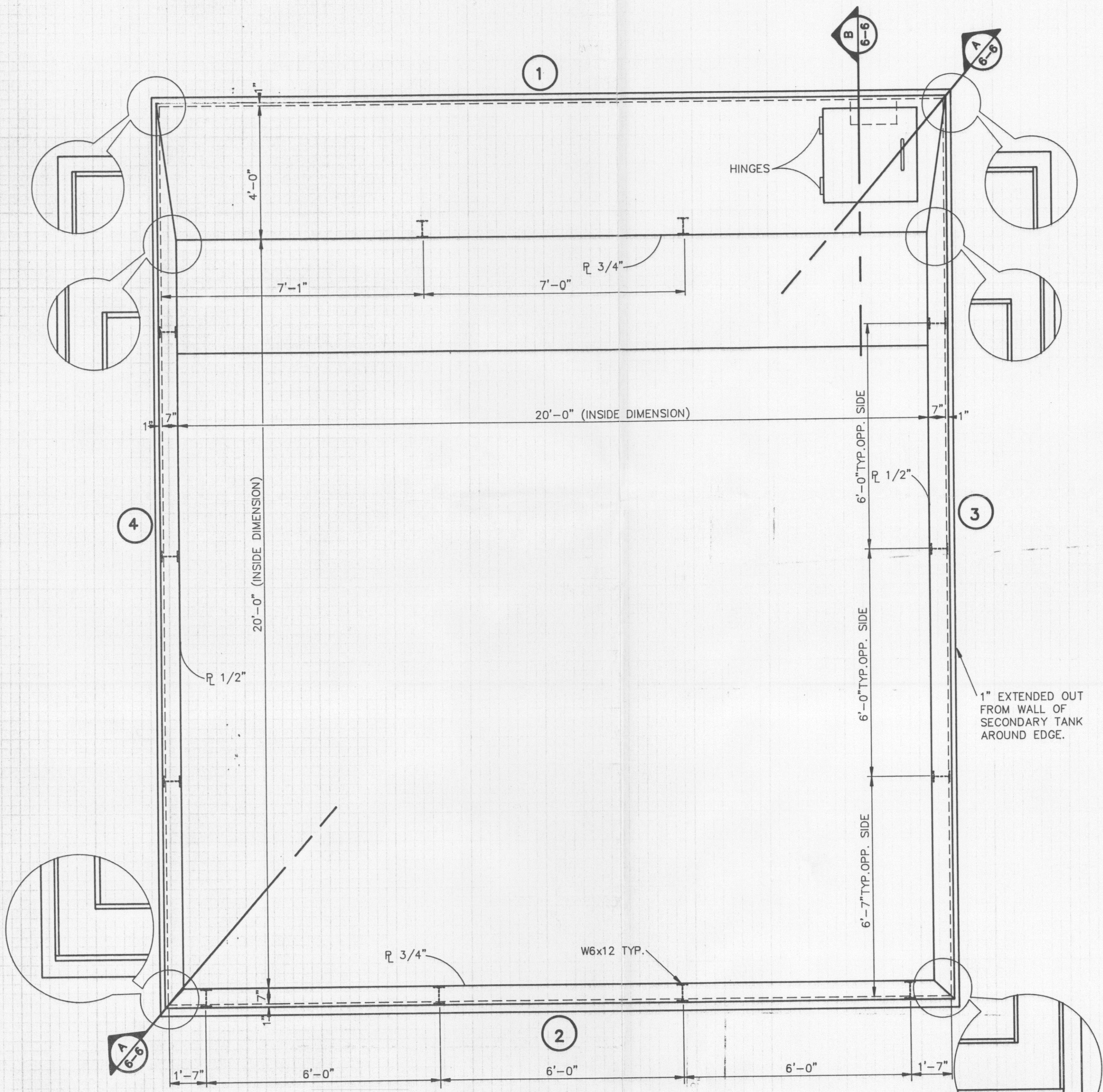
The Leachate Tank System includes Leachate Tank 119-TN-002. Tank 119-TN-002 is twelve feet in diameter and twenty feet high (maximum allowable capacity 16,900 gallons). The tank is constructed of carbon steel.

CHGM shall only store run-off containment waters from secondary containment, non-hazardous wastewaters, multi-source leachate (F039), and TSCA/RCRA leachate (combination multi-source leachate) in Storage Tank 119-TN-002. Treatment is not allowed in this tank.

IV.B.1. Leachate Tank System Engineering Drawings

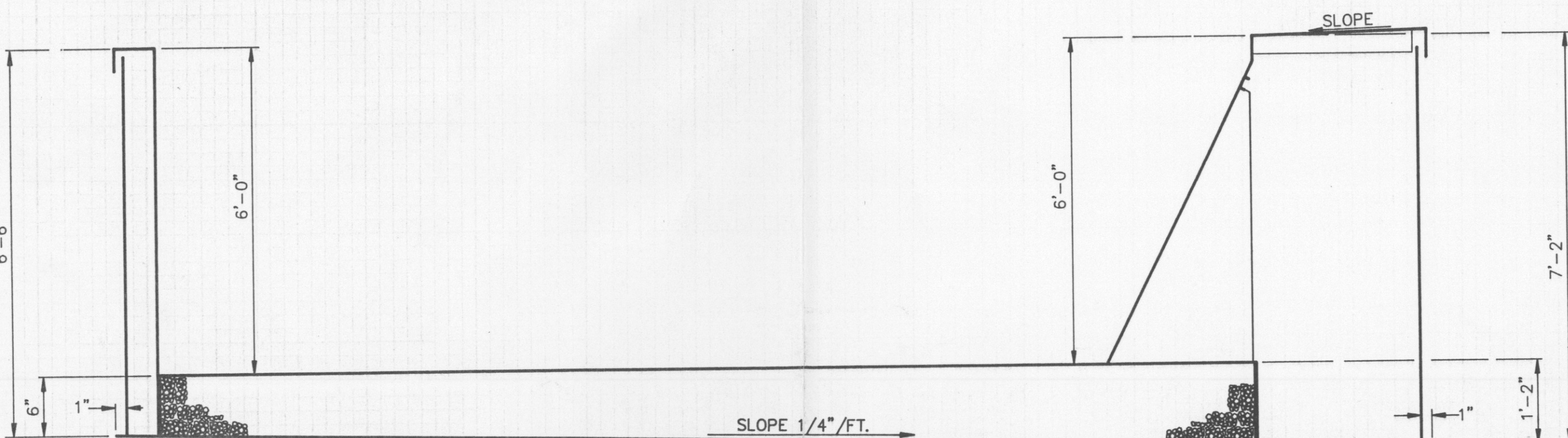
The following table identifies the drawing associated with the Leachate Tanks and the tank’s secondary containment.

Unit Description	Drawing Number
Leachate Treatment System Secondary Containment Area	D-32-55-204
Leachate Tanks (119-TN-002)	D-32-55-701

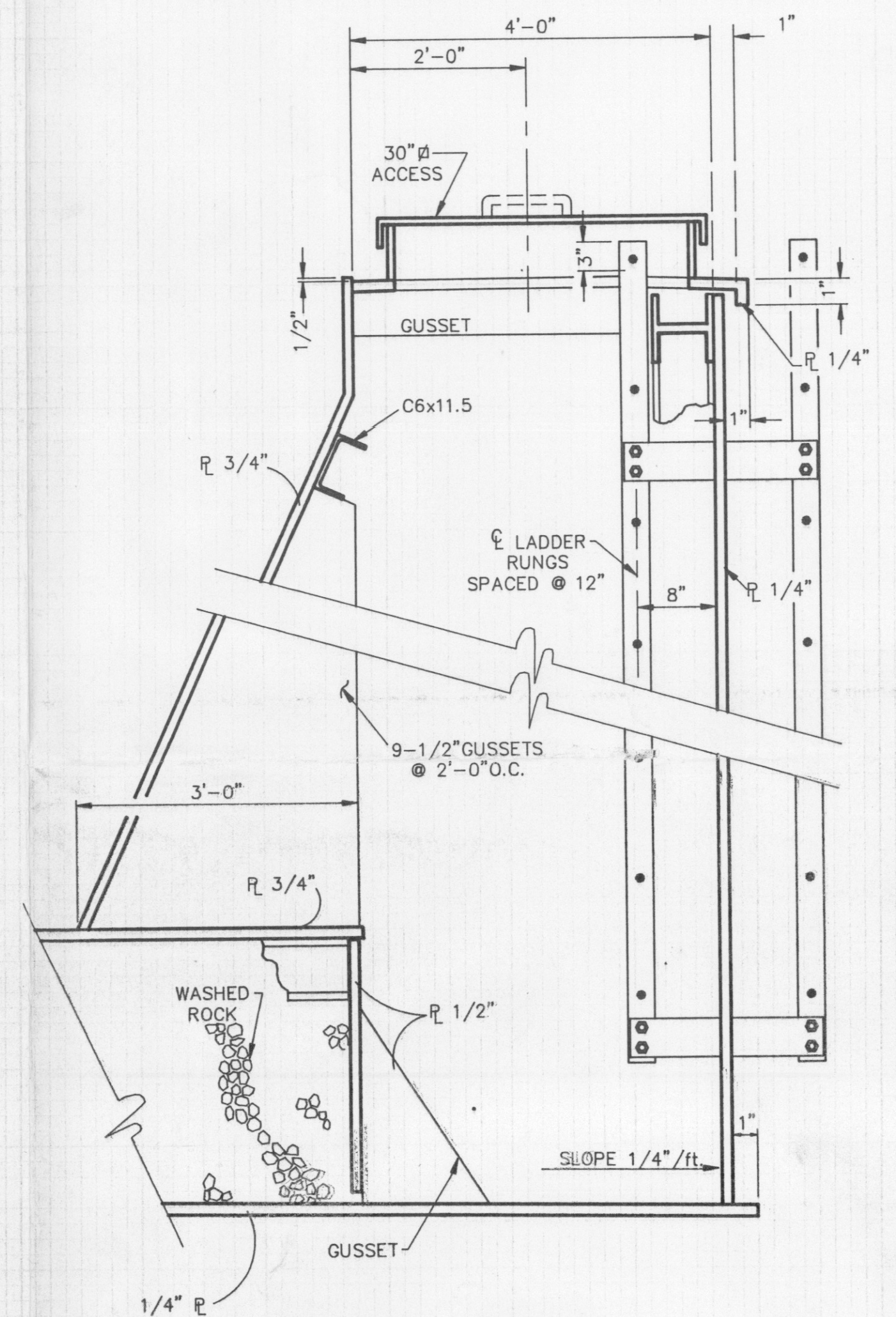
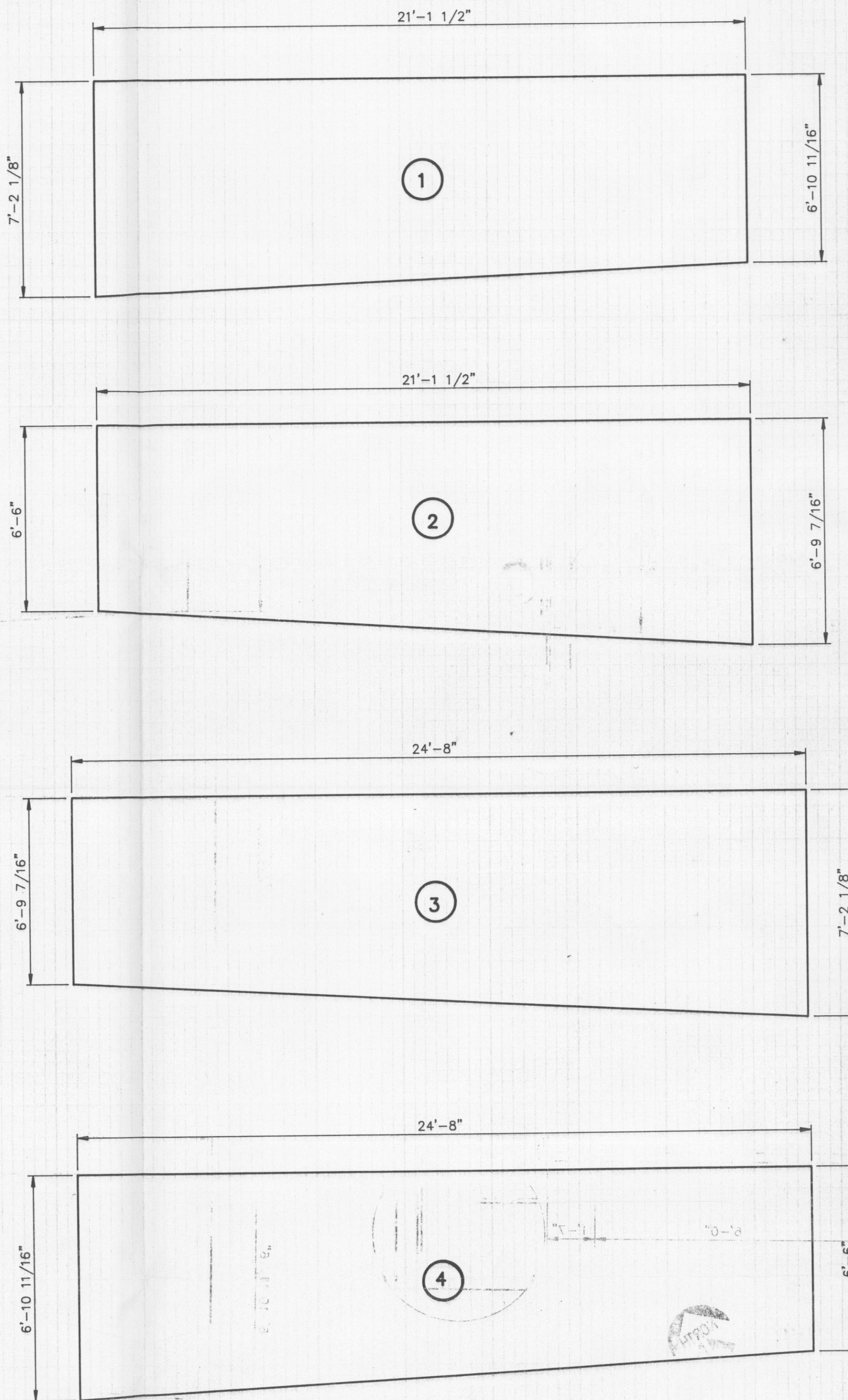


STABILIZATION TANK PLAN VIEW

SCALE: 1/2"=1'-0"



A SECTION
6-6 SCALE: 1/2"=1'-0"



B SECTION
6-6 SCALE: 1"=1'-0"

NOTE: 4' TALL SPLASH GUARDS NOT SHOWN AROUND TOP PERIMETER OF TANK.

NO.	DWN	DATE	REVISION	APP'D	DATE

U.S. POLLUTION CONTROL, INC.

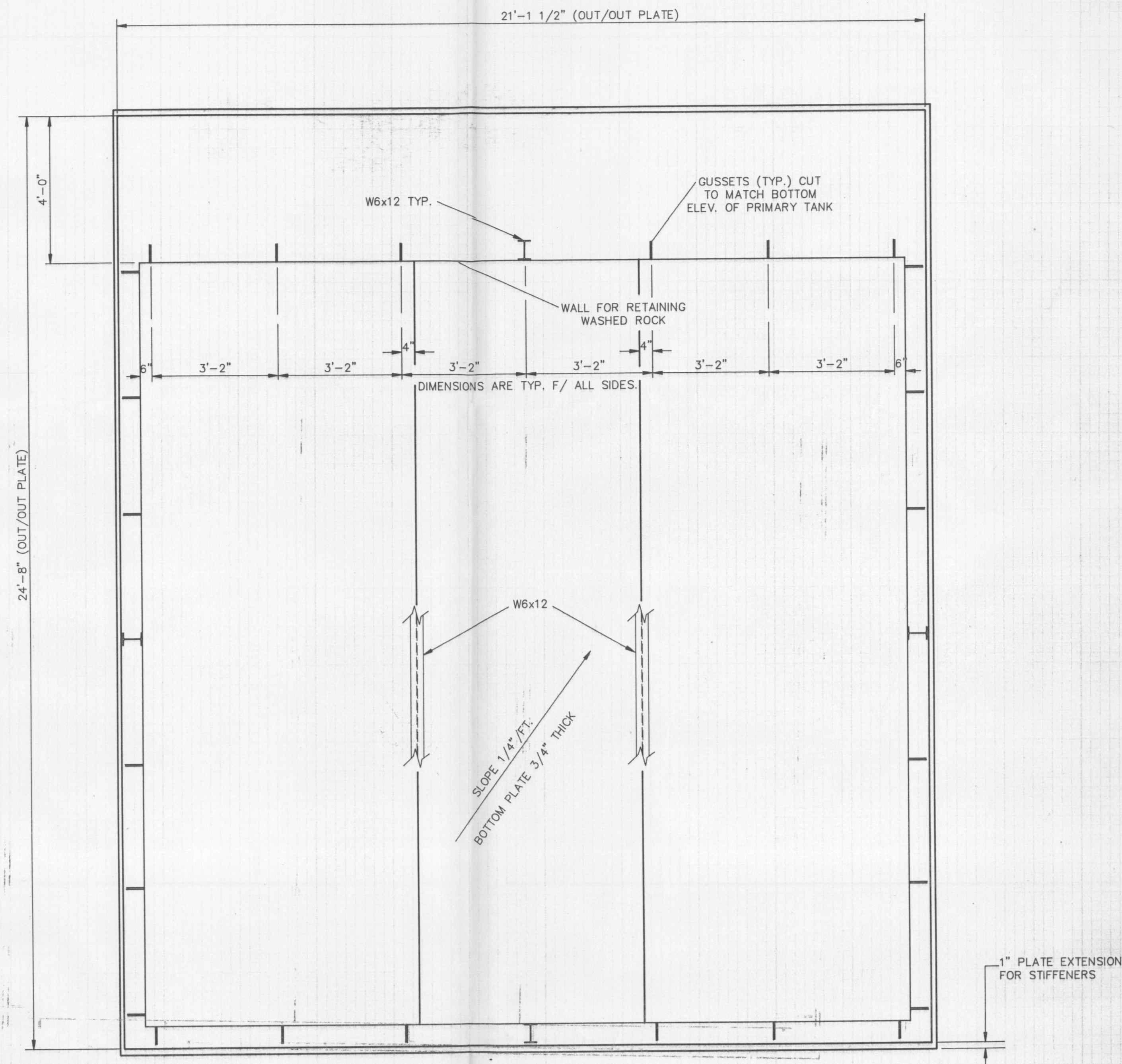
GRASSY MOUNTAIN FACILITY

STABILIZATION TANK PLAN AND DETAILS

PROJECT NO.	DATE	SCALE	SEAL
DESIGNED BY	DRAWN BY	CHECKED BY	SHEET

THIS DRAWING IS THE PROPERTY OF AND EMBODIES PROPRIETARY INFORMATION BELONGING TO U.S.P.C.I., INC. AND MUST BE RETURNED IMMEDIATELY UPON REQUEST. IT MUST NOT BE COPIED IN WHOLE OR PART, NOR THE INFORMATION SHOWN THEREON DISCLOSED TO THIRD PARTIES EXCEPT WITH THE EXPRESS WRITTEN PERMISSION OF U.S.P.C.I., INC.

DWG. **D-32-20-703**



SECONDARY TANK PLAN

SCALE: 1/2"=1'-0"



NO.	DWN	DATE	REVISION	APP'D	DATE

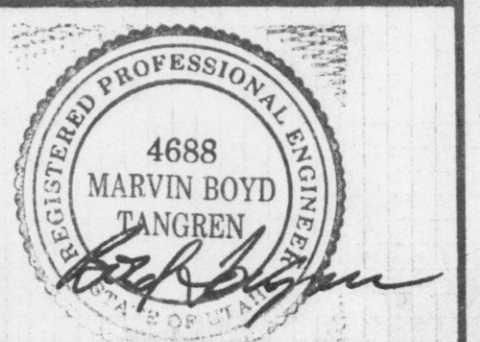


GRASSY MOUNTAIN FACILITY

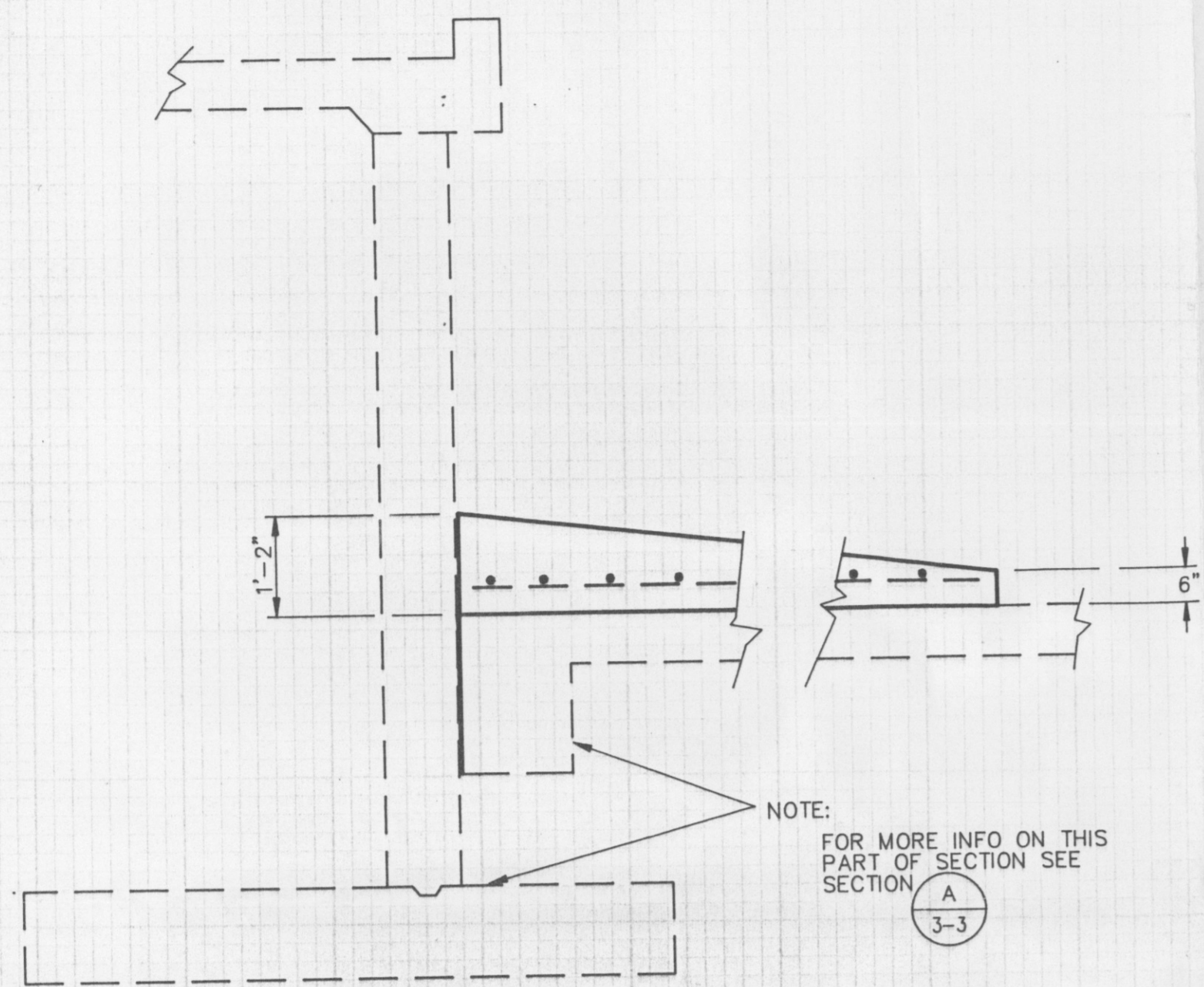
SECONDARY TANK PLAN

NOTICE

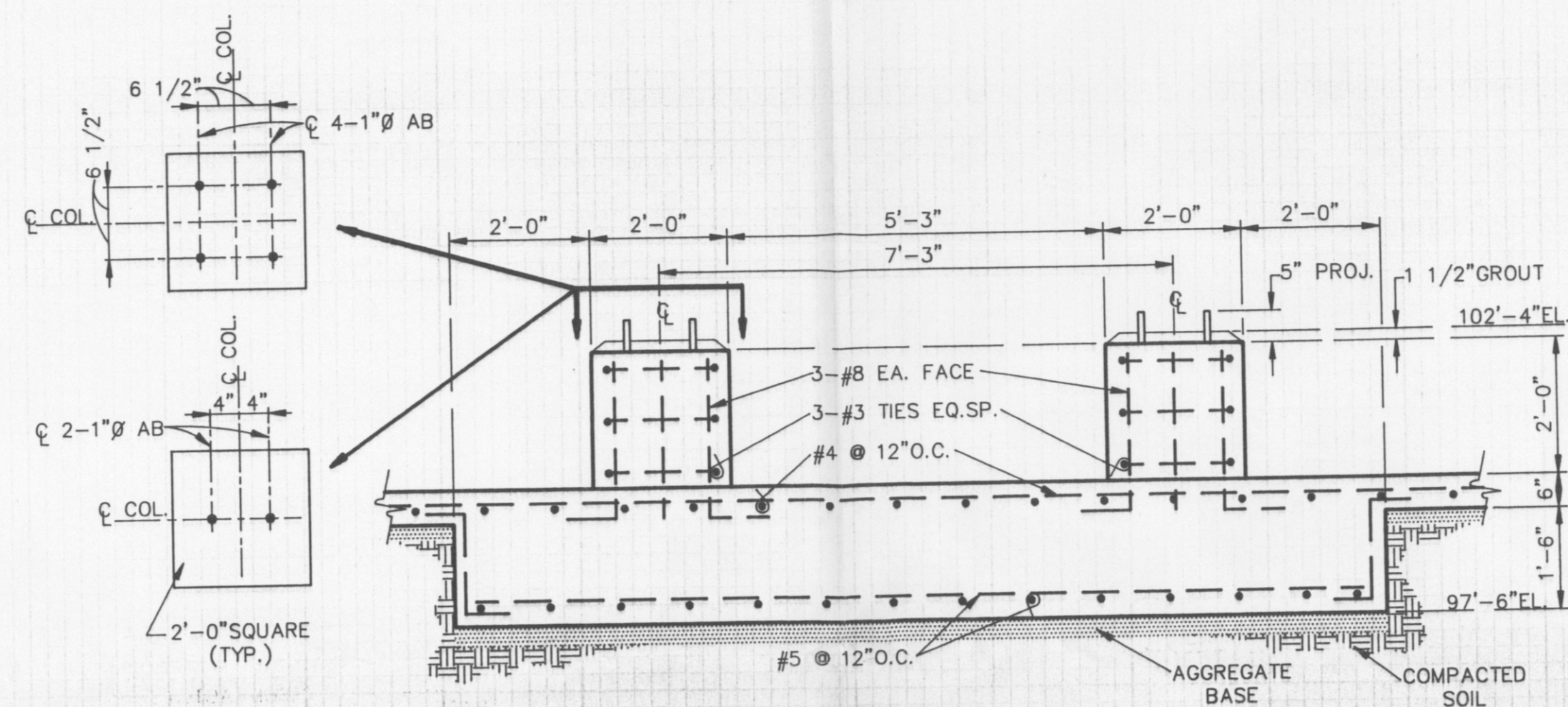
THIS DRAWING IS THE PROPERTY OF AND EM
BODIES PROPRIETARY INFORMATION BELONGING
TO U.S.P.C.I., INC. AND MUST BE RETURNED IM-
MEDIATELY UPON REQUEST. IT MUST NOT BE
COPIED IN WHOLE OR PART, NOR THE INFOR-
MATION SHOWN THEREON DISCLOSED TO THIRD
PARTIES EXCEPT WITH THE EXPRESS WRITTEN
PERMISSION OF U.S.P.C.I., INC.



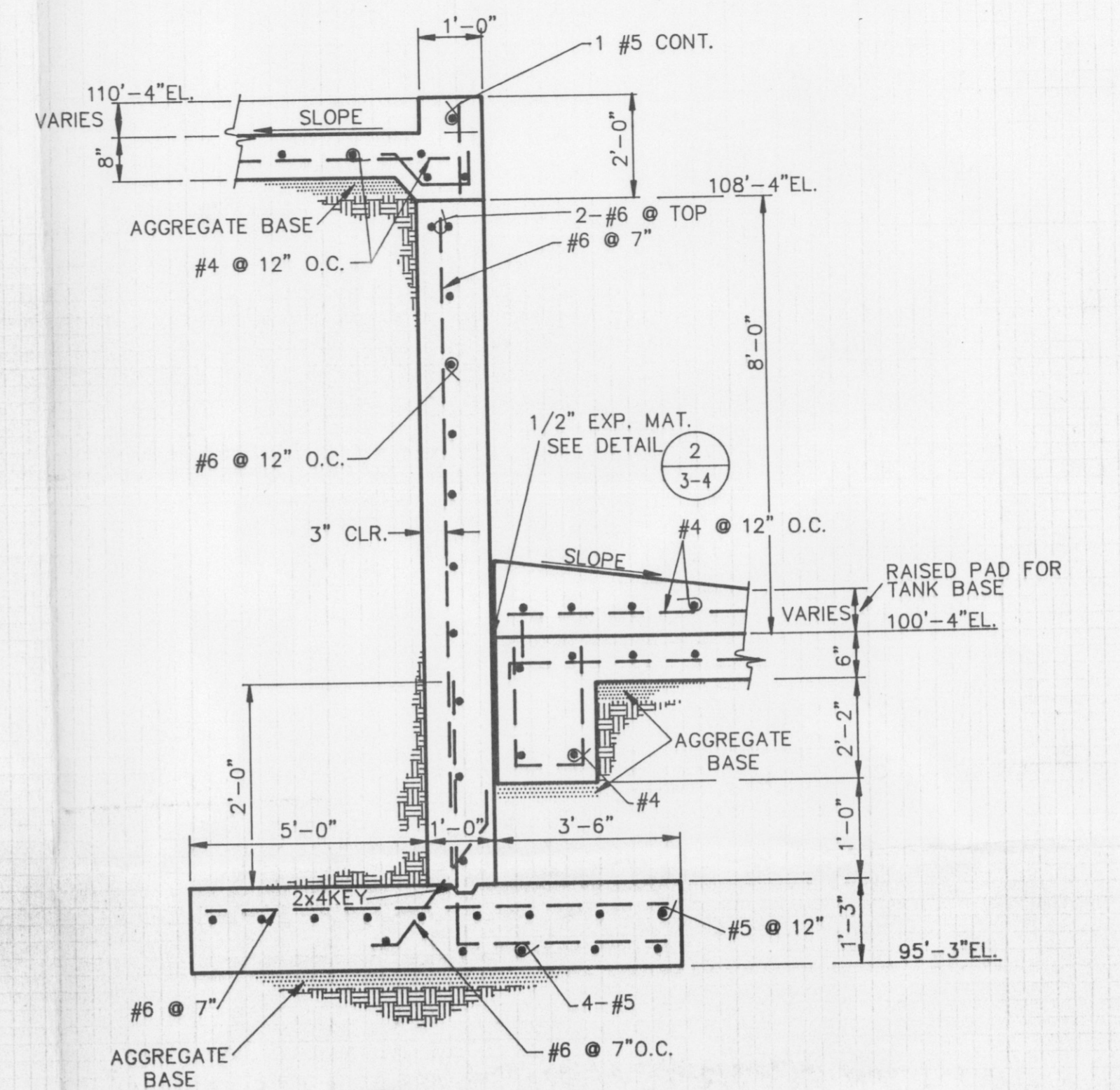
PROJECT NO. 3289016	DATE 5/88	SCALE SHOWN	SEAL
DESIGNED BY R.H.	DRAWN BY SD	CHECKED BY	DWG. D-32-20-704 REV.
SHEET 6 OF 6			



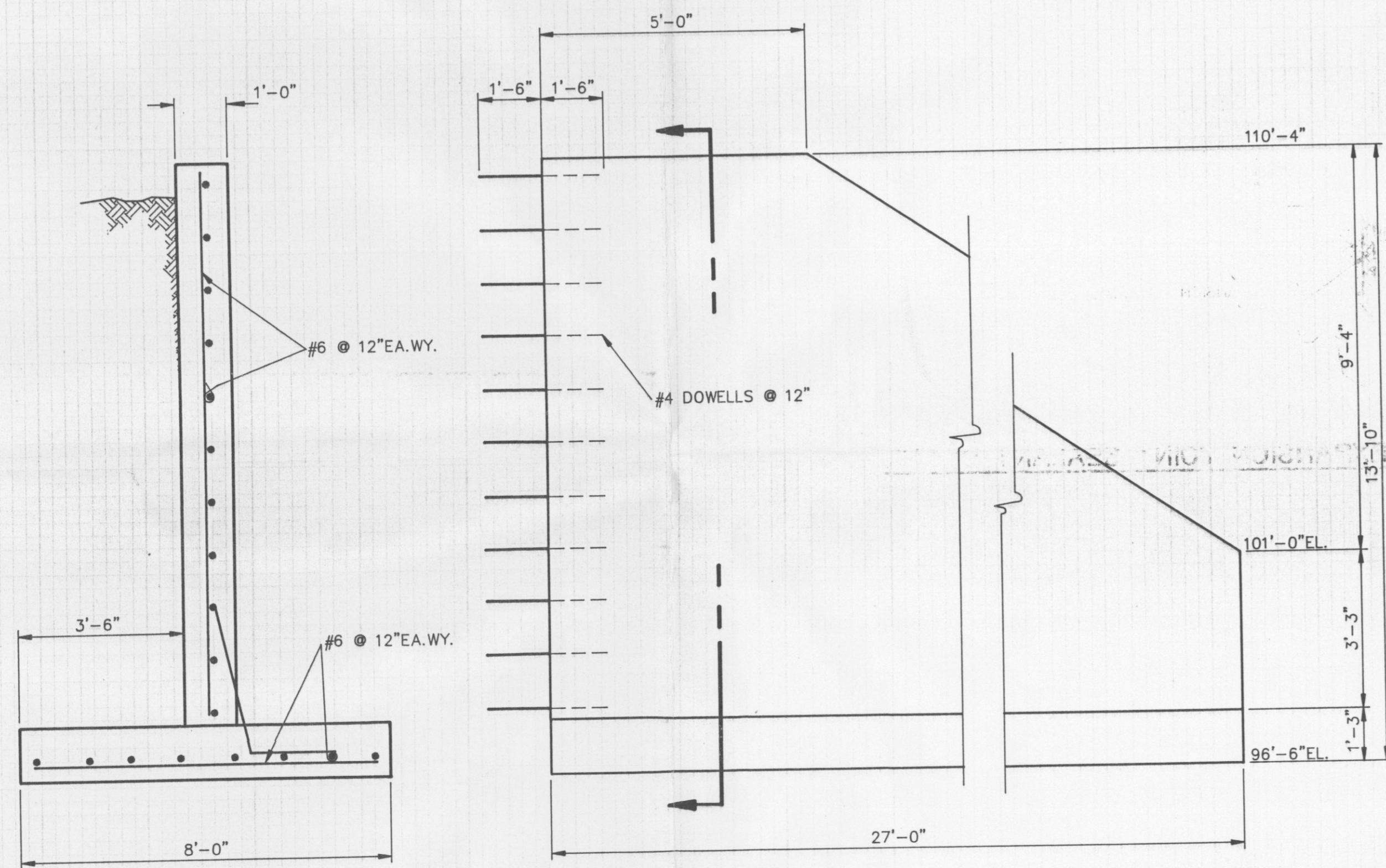
P SECTION
3-4 SCALE: N.T.S.



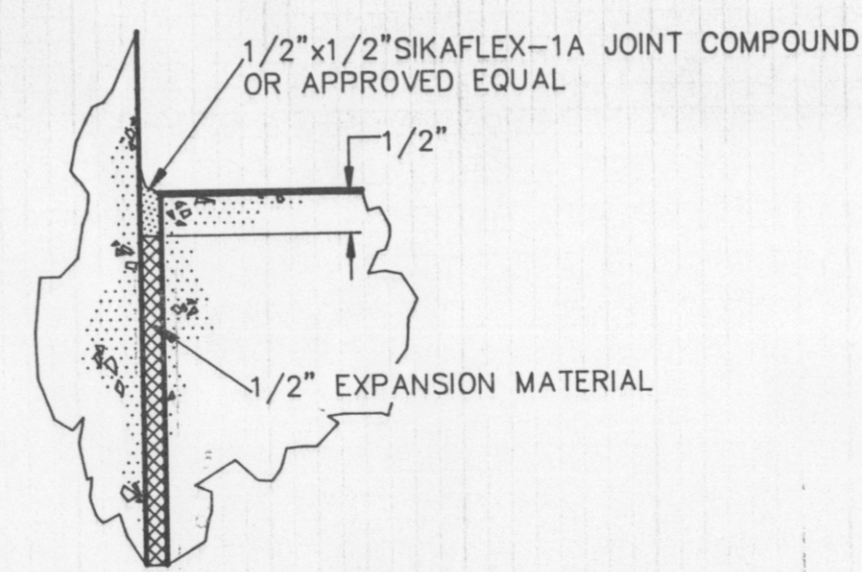
N SECTION
3-4 SCALE: N.T.S.



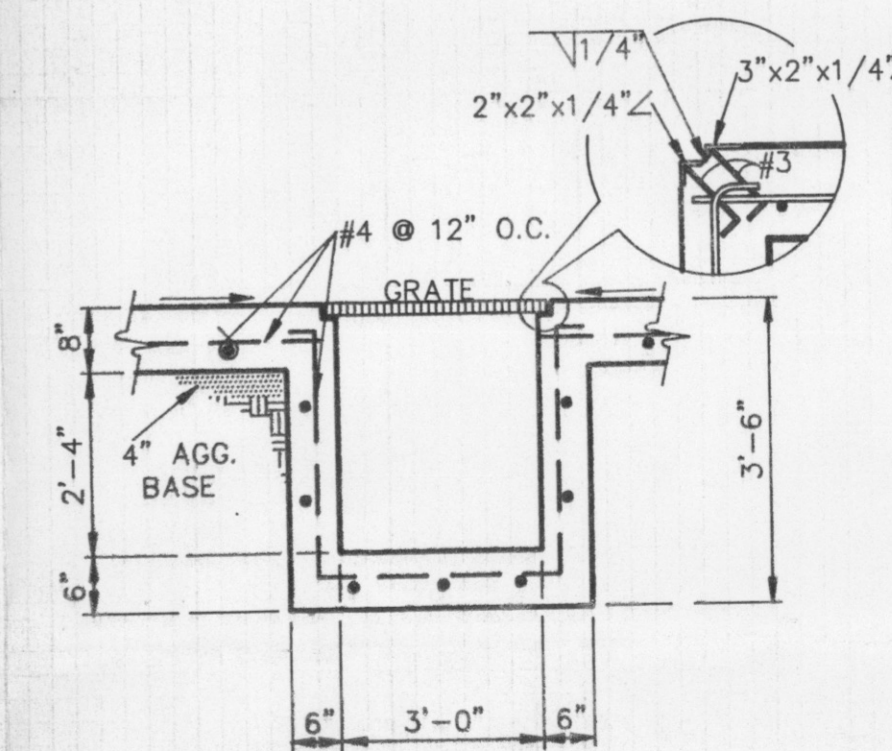
M SECTION
3-4 SCALE: N.T.S.



1 RETAINING WALL DETAIL
3-4 SCALE: N.T.S.



2 TYP. EXPANSION JOINT SEALANT DETAIL
3-4 SCALE:



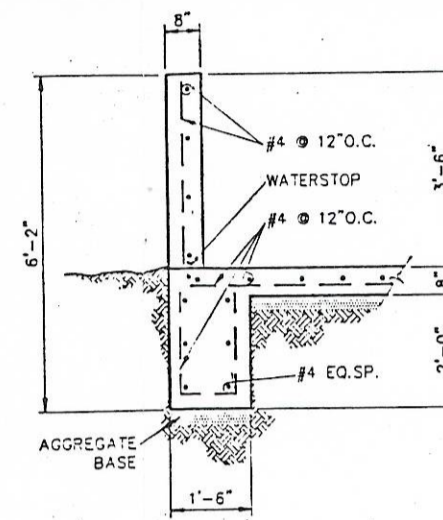
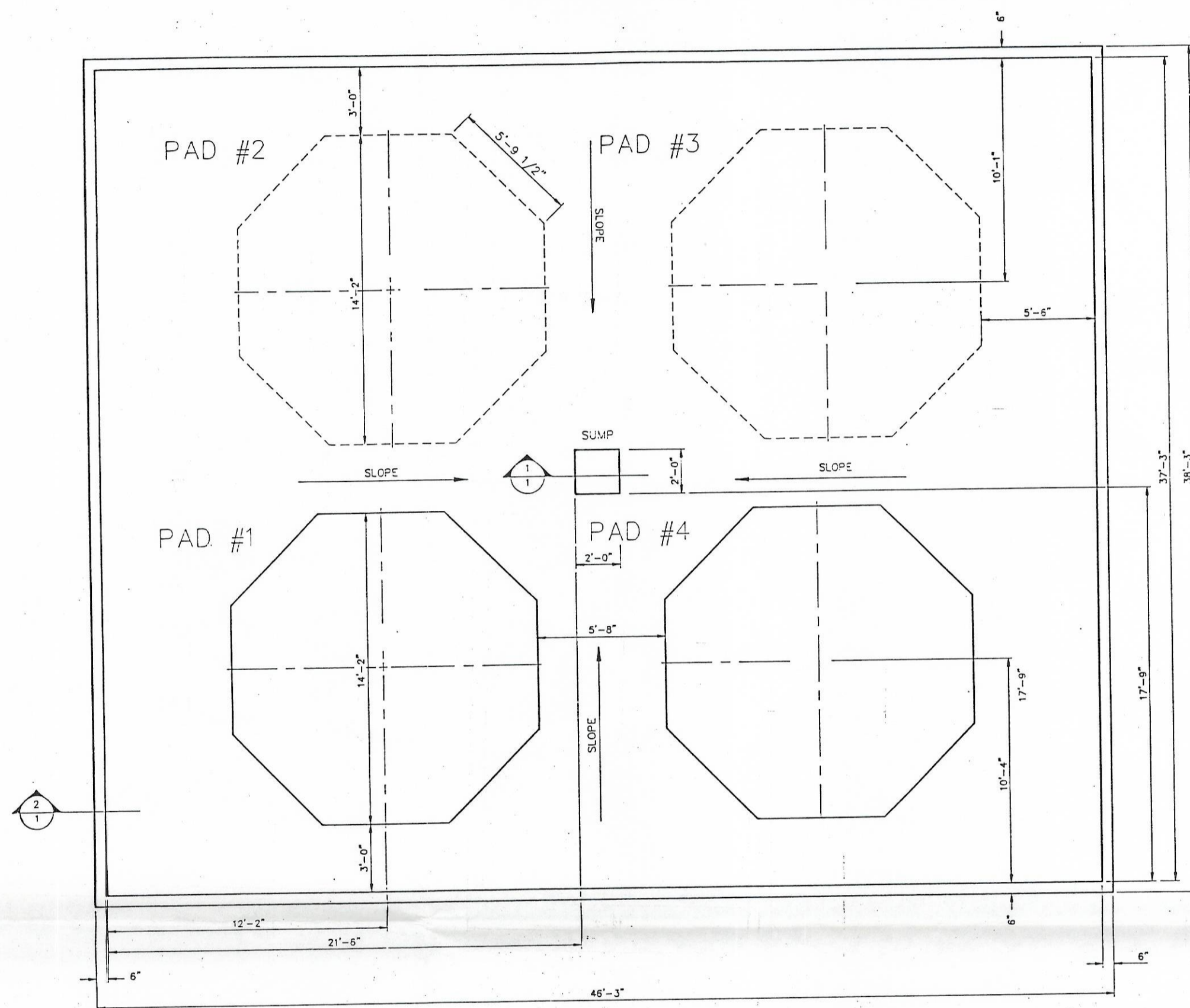
J SECTION
3-4 SCALE: N.T.S.

NO.	DWN	DATE	REVISION	APPD	DATE

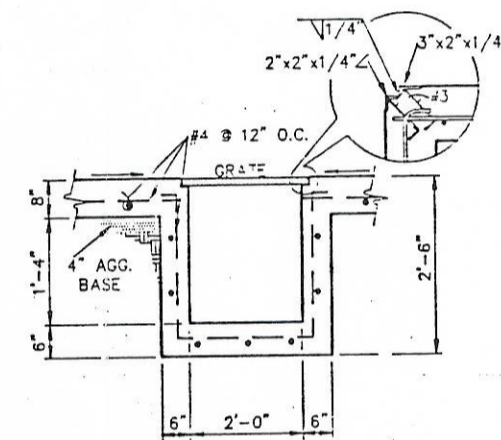
U.S. POLLUTION CONTROL, INC.
GRASSY MOUNTAIN FACILITY STABILIZATION SYSTEM
FOUNDATION SECTIONS AND DETAILS

NOTICE
THIS DRAWING IS THE PROPERTY OF AND EMBODES PROPRIETARY INFORMATION BELONGING TO U.S.P.C.I., INC. AND MUST BE RETURNED IMMEDIATELY UPON REQUEST. IT MUST NOT BE COPIED IN WHOLE OR PART, NOR THE INFORMATION SHOWN THEREON DISCLOSED TO THIRD PARTIES EXCEPT WITH THE EXPRESS WRITTEN PERMISSION OF U.S.P.C.I., INC.

PROJECT NO. DATE SCALE
DESIGNED BY DRAWN BY CHECKED BY
DWG. D-32-20-202
SHEET OF



2 TYPICAL WALL SECTION
1 SCALE: N.T.S.



1 TYPICAL SUMP SECTION
1 SCALE: N.T.S.

G:\PROJECTS\GRASSMOUNT\PROJECTS\GRASSMOUNT\03255204

REV.	DATE	BY	DESCRIPTION	APP'D	DATE
1	4/22/90	RR	CHANGE TO D-SIZE	X	X

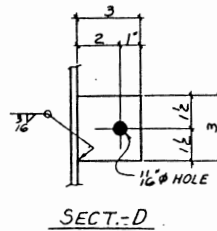
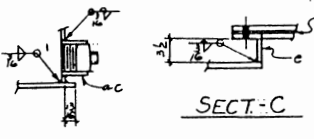
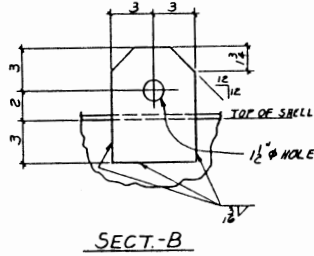
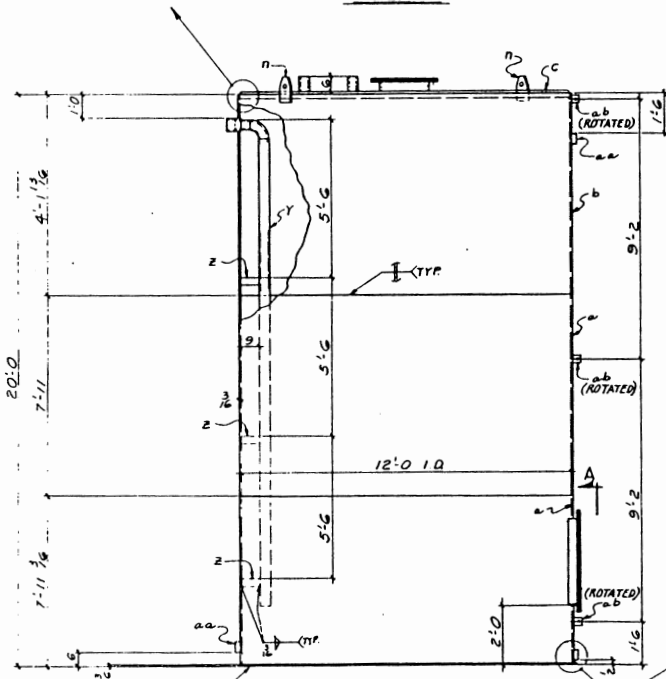
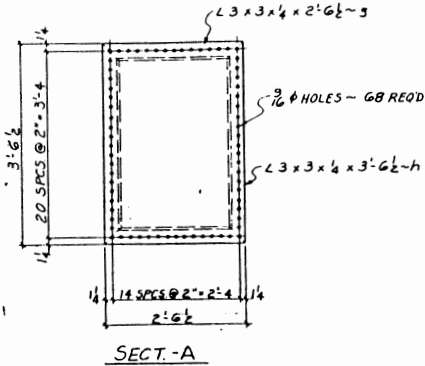
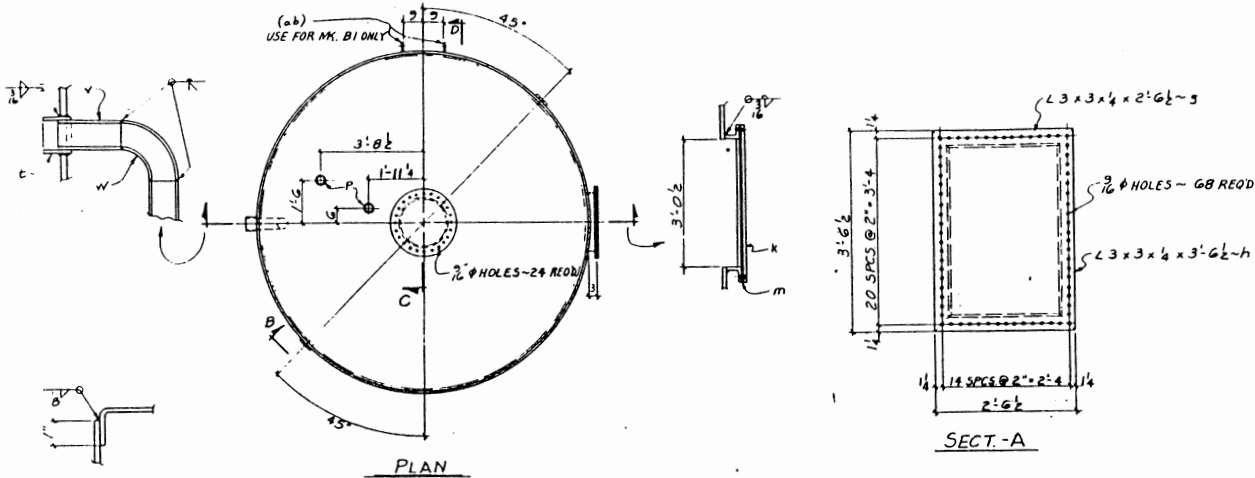
USPCI
A Subsidiary of
Union Pacific Corporation

GRASSY MOUNTAIN FACILITY
LEACHATE TREATMENT SYSTEM
SECONDARY CONTAINMENT AREA

NOTICE

THIS DRAWING IS THE PROPERTY OF AND EMBODIES PROPRIETARY INFORMATION BELONGING TO USPCI AND MUST BE RETURNED IMMEDIATELY UPON REQUEST. IT MUST NOT BE COPIED IN WHOLE OR PART, NOR THE INFORMATION SHOWN THEREON DISCLOSED TO THIRD PARTIES EXCEPT WITH THE EXPRESS WRITTEN PERMISSION OF USPCI.

PROJECT NO.	DATE	SCALE	DRAWING NO.	REV.
X	4/22/90	SHOWN	D-32-55-204	1
DESIGNED BY	DRAWN BY	CHECKED BY	DRAWING NO.	REV.
DP	RR	DP	X	X
			SHEET	
			1	OF 1



3 - TANKS - MK. A1 (AS SHOWN)
2 - TANKS - MK. B1 (AS SHOWN & NOTED)

BILL OF MATERIALS									
NO	DESCRIPTION	LENGTH	PC	REMARKS	UNIT	WEIGHT			
PK		FT	IN						
1									
2									
3	TANKS			A1					
4	TANKS			B1					
10	R 3/4 x 9 5/8	37	9	d	ROLL	2282			
5	R 3/4 x 4 5/8	37	9	d	ROLL	3997			
5	14 1/4 O.D. FLAT PLG			G		6179			
4	HEADS 1/4 E								
5	R 3/4 x 1 1/2	12	2	d		5625			
14	24" O MANNHOLE			G	W/COVER	375			
5	GSKT 23 1/2" I.D			F	1/2" RUBBER	20			
11	28" O.D								
10	L 3 x 3 x 4	2	6 1/2	J		145			
10	L 3 x 3 x 4	3	6 1/2	J		174			
5	R 3/4 x 30 1/2	3	6 1/2	A		440			
5	GSKT 30 1/2	3	6 1/2	A	1/2" RUBBER	20			
10	BAR 6 x 3 1/2	0	8	A		51			
10	PIPE 4" SCH 40	0	6	A	TAIL ONE END NPT	54			
5	4" 300# HTCP LGB	0	6	E		16			
5	PIPE 4" SCH 40	0	6	V		87			
5	4" L.R. ELBOW	0	1	A	SCH 40	43			
5	PIPE 4" SCH 40	0	6	V	SCH 40	89			
15	BAR 3 x 4	0	9	A		43			
10	4" 300# HTCP	0	3	A	H.C.P.L.G.	18			
5	4" 300# HTCP	0	3	A	FOR MK. B1 ONLY	18			
5	4" 300# HTCP	0	3	A	H.C.P.L.G. W/PLG	19			
14	BOLTS 2" O.M.B.	0	12		1/2" N.Y.BAG	40			

WT. SHIP. BY:	WT. CRG'D BY:	NET TOTAL WT.
MAX. WT. OF SHIPPING UNIT:	NO. BOLTS:	NET TOTAL WT.
		TOTAL WEIGHT (LBS) 43,230

NOTES:
1 - ALL MATL A36 U.N.
2 - SEE DWG. # 2 FOR LADDER & CAGE DETAILS.

Treated Leachate
119-TN-002

S. K. HART ENERGY FACILITY

CUSTOMER:	MARK STEEL CORPORATION
U.S.P.C.I.	
P.O. No.: 0-4597	

GRABBY MOUNTAIN FACILITY	DRAWN BY: J.E. 12-28-61
WASTE LIQUID STORAGE TANKS 1, 2, & 3	CHECKED BY: G.C. 12-28-61
SCALE:	DRAWING NO. 24636-11
DRAWING NO. 24636-11	DATE: 12-28-61

REFERENCE DRAWINGS	REVISIONS	CERTIFIED PRINT
U.S.P.C.I. 8" x 11" DWG 3N1		HOLER A3 5/8" W/PAINT, PRIMED & PAINT DARK BLUE

Drawing Number D-32-55-701